



iwis ketten
Joh. Winkhofer & Söhne GmbH & Co. KG
bewegen die welt



7

Roller chains

JWTS

gallon
INDUSTRIAL TECHNOLOGY

Roller chains

to DIN 8187-1, ISO 606: 1994 and IWIS standard

7
ROLLER CHAINS

	DIN ISO no.	Dimensional designation x inner width	Pitch p (mm)	IWIS (N)	Norm (N) min.	Breaking load F_B	Bearing area f (cm ²)	Weight per m q (kg/m)	Chain components and connecting links	b_1 (mm) min.	b_2 (mm) max.	Inner link g (mm) max.	a_1 (mm) max. ²⁾	Outer link a (mm) max. ²⁾	Roller d_1 (mm) max.	Pin d_2 (mm) max.
Single																
G 42	04	6 x 2,8 mm	6,00	3.200	3.000	0,07	0,12	2, 3, 7, 8		2,80	4,10	5,00	6,70	7,60	4,00	1,85
G 52	05 B-1	8 mm x 1/8"	8,00	6.000	5.000	0,11	0,18	2, 3, 7, 8		3,16	4,85	7,10	8,10	9,20	5,00	2,31
G 53 H ¹⁾ ³⁾	-	8 mm x 3/16"	8,00	9.000	-	0,25	0,34	2, 8		4,76	7,90	7,60	11,70	-	5,00	3,15
G 62 1/2" ¹⁾	-	3/8 x 5/32"	9,525	11.000	-	0,22	0,34	2, 3, 7, 8		3,94	6,63	8,20	11,00	12,20	6,35	3,31
G 67 SL ¹⁾	06 B-1	3/8 x 1/32"	9,525	11.500	9.000	0,28	0,41	2, 3, 6, 7, 8		5,72	8,53	8,20	12,90	14,10	6,35	3,31
P 83 V	-	1/2 x 3/16"	12,70	15.500	-	0,29	0,44	2, 3, 6, 7, 8		4,88	7,97	10,20	13,20	14,10	7,75	3,68
S 84 V	-	1/2 x 1/4"	12,70	18.000	-	0,38	0,58	2, 3, 6, 7, 8		6,40	9,65	12,00	15,00	16,00	7,75	3,97
L 85 SL	08 B-1	1/2 x 5/16"	12,70	22.000	18.000	0,50	0,70	2, 3, 6, 7, 8		7,75	11,30	12,20	16,90	18,50	8,51	4,45
M 106 SL	10 B-1	5/8 x 3/8"	15,875	27.500	22.400	0,67	0,95	2, 3, 6, 7, 8		9,65	13,28	14,40	19,50	20,90	10,16	5,08
M 127 SL	12 B-1	3/4 x 1/2"	19,05	34.000	29.000	0,89	1,25	2, 3, 4, 6, 7, 8		11,75	15,62	16,40	22,70	23,60	12,07	5,72
M 1611	16 B-1	1" x 17mm	25,40	75.000	60.000	2,10	2,70	2, 3, 6, 7, 8		17,02	25,45	21,10	36,10	36,90	15,88	8,28
M 2012	20 B-1	1 1/4 x 3/4"	31,75	105.000	95.000	2,92	3,72	2, 4, 6, 8		19,56	29,01	25,40	40,50	46,30	19,05	10,19
M 2416	24 B-1	1 1/2 x 1"	38,10	190.000	160.000	5,50	7,05	2, 4, 6, 8		25,40	37,92	33,50	53,10	58,00	25,40	14,63
M 2819	28 B-1	1 3/4 x 31mm	44,45	220.000	200.000	7,35	8,96	2, 4, 6, 8		30,95	46,58	37,00	65,10	69,90	27,94	15,90
M 3219	32 B-1	2" x 31mm	50,80	270.000	250.000	8,05	10,00	2, 4, 6, 8		30,95	45,57	42,30	63,60	70,10	29,21	17,81

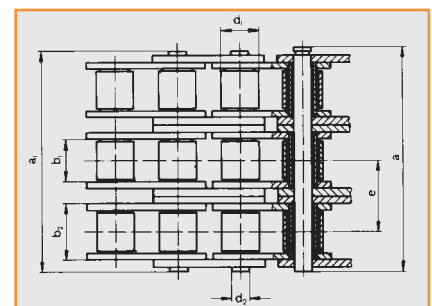
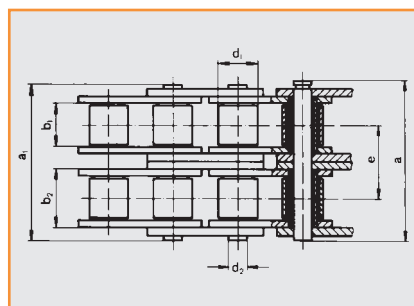
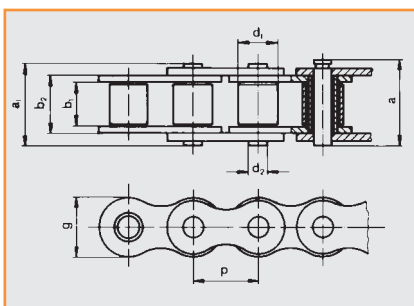
¹⁾ Straight side plate

²⁾ Varying dimensions for cranked links

³⁾ Bush chain

It should be noted that if cranked links are fitted, the breaking strength of the chain may be reduced by approximately 20%.

The suffix SL indicates chains with particularly wear-resistant pins.



Roller chains

to DIN 8187-1, ISO 606: 1994 and IWIS standard

	DIN ISO no.	Dimensional designation x inner width	Pitch p (mm)	IWIS (N)	Norm (N) min.	Breaking load F_b	Bearing area f (cm ²)	Weight per m q (kg/m)	Chain components and connecting links NGS	b_1 (mm) min.	b_2 (mm) max.	Inner link g (mm) max.	a_1 (mm) max. ¹⁾	Outer link a (mm) max. ²⁾	Roller d (mm) max.	Pin d_f (mm) max.	e (mm)
Double																	
D 52	05 B-2	8 mm x 1/8"	8,00	9.100	7.800	0,22	0,36	2, 3, 8	3,16	4,85	7,10	13,90	15,00	5,00	2,31	5,64	
D 67 1)	06 B-2	3/8 x 7/32"	9,525	20.000	16.900	0,56	0,78	2, 3, 6, 7, 8	5,72	8,53	8,20	23,40	24,60	6,35	3,31	10,24	
D 85 SL	08 B-2	1/2 x 5/16"	12,70	40.000	32.000	1,00	1,35	2, 3, 6, 7, 8	7,75	11,30	12,20	30,80	32,40	8,51	4,45	13,92	
D 106 SL	10 B-2	5/8 x 3/8"	15,875	56.000	44.500	1,34	1,85	2, 3, 6, 7, 8	9,65	13,28	14,40	36,00	37,50	10,16	5,08	16,59	
D 127	12 B-2	3/4 x 7/16"	19,05	68.000	57.800	1,78	2,50	2, 3, 6, 7, 8	11,75	15,62	16,40	42,10	43,00	12,07	5,72	19,46	
D 1611	16 B-2	1" x 17mm	25,40	150.000	106.000	4,21	5,40	2, 3, 6, 7, 8	17,02	25,45	21,10	68,00	68,80	15,88	8,28	31,88	
D 2012	20 B-2	1 1/4 x 3/4"	31,75	200.000	170.000	5,84	7,36	2, 4, 6, 8	19,56	29,01	25,40	79,70	82,90	19,05	10,19	36,45	
D 2416	24 B-2	1 1/2 x 1"	38,10	370.000	280.000	11,00	13,85	2, 4, 6, 8	25,40	37,92	33,50	101,80	106,50	25,40	14,63	48,36	
D 2819	28 B-2	1 3/4 x 31mm	44,45	430.000	360.000	14,70	18,80	2, 4, 6, 8	30,95	46,58	37,00	124,70	129,20	27,94	15,90	59,56	
D 3219	32 B-2	2" x 31mm	50,80	530.000	450.000	16,10	19,80	2, 4, 6, 8	30,95	45,57	42,30	126,00	128,30	29,21	17,81	58,55	
Triple																	
Tr 85	08 B-3	1/2 x 5/16"	12,70	58.000	47.500	1,50	2,00	2, 3, 7, 8	7,75	11,30	12,20	44,70	46,30	8,51	4,45	13,92	
Tr 106	10 B-3	5/8 x 3/8"	15,875	80.000	66.700	2,02	2,80	2, 3, 7, 8	9,65	13,28	14,40	52,50	54,00	10,16	5,08	16,59	
Tr 127	12 B-3	3/4 x 7/16"	19,05	100.000	86.700	2,68	3,80	2, 3, 7, 8	11,75	15,62	16,40	61,50	62,50	12,07	5,72	19,46	
Tr 1611	16 B-3	1" x 17mm	25,40	220.000	160.000	6,32	8,00	2, 3, 6, 7, 8	17,02	25,45	21,10	99,20	100,70	15,88	8,28	31,88	
Tr 2012	20 B-3	1 1/4 x 3/4"	31,75	290.000	250.000	8,76	11,00	2, 4, 6, 8	19,56	29,01	25,40	116,10	119,40	19,05	10,19	36,45	
Tr 2416	24 B-3	1 1/2 x 1"	38,10	540.000	425.000	16,50	20,31	2, 4, 6, 8	25,40	37,92	33,50	150,20	155,40	25,40	14,63	48,36	
Tr 2819	28 B-3	1 3/4" x 31mm	44,45	640.000	530.000	22,05	28,00	2, 4, 6, 8	30,95	46,58	37,00	184,60	188,90	27,94	15,90	59,56	
Tr 3219	32 B-3	2" x 31mm	50,80	780.000	670.000	24,15	29,60	2, 4, 6, 8	30,95	45,57	42,30	184,50	186,50	29,21	17,81	58,55	

1) Straight side plate

It should be noted that if cranked links are fitted, the breaking strain of the chain may be reduced by approximately 20%.

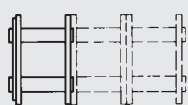
The suffix SL indicates chains with particularly wear-resistant pins.

2) Varying dimensions for cranked links

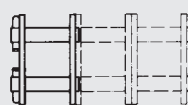
Chain components and connecting links



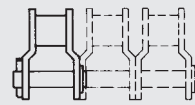
Nr. 2 Inner links Standard designation B



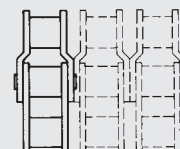
Nr. 3 Connecting link with spring clip Standard designation E



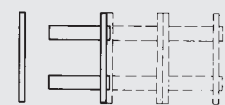
Nr. 4 Connecting link with split pin fastening Standard designation S



Nr. 6 Single cranked link with split pin fastening Standard designation L



Nr. 7 Double cranked links Standard designation C



Nr. 8 Outer link Standard designation A

Roller chains

to DIN 8188-1, American standard, ISO 606: 1994

7

ROLLER CHAINS

	DIN ISO no.	Dimensional designation Pitch x inner width	Pitch p (mm)	IWIS (N)	Norm (N) min.	Breaking load F_b	Bearing area f (cm ²)	Weight per m q (kg/m)	Chain components and connecting links Nos.	b_1 (mm) min.	b_2 (mm) max.	Inner link g (mm) max.	a_1 (mm) max. ²⁾	Outer link a (mm) max. ²⁾	Roller d (mm) max.	Pin d_1 (mm) max.	e (mm)
Single																	
L 85 A	08 A-1	$1/2 \times 5/16"$	12,70	18.000	14.100	0,44	0,60	2, 3, 6, 7, 8	7,94	11,15	12,00	16,60	17,50	7,95	3,96	-	
M 106 A	10 A-1	$5/8 \times 3/8"$	15,875	29.000	22.200	0,70	1,00	2, 3, 6, 7, 8	9,53	13,84	14,40	20,40	21,70	10,16	5,08	-	
M 128 A SL ¹⁾	12 A-1	$3/4 \times 1/2"$	19,05	42.000	31.800	1,06	1,47	2, 3, 4, 6, 7, 8	12,70	17,75	18,00	25,30	26,70	11,91	5,94	-	
M 1610 A	16 A-1	$1 \times 5/8"$	25,40	68.000	56.700	1,79	2,57	2, 3, 4, 6, 7, 8	15,88	22,60	22,80	32,10	34,00	15,88	7,92	-	
Double																	
D 85 A	08 A-2	$1/2 \times 5/16"$	12,70	36.000	28.200	0,88	1,19	2, 3, 4, 6, 7, 8	7,94	11,15	12,00	31,00	31,90	7,95	3,96	14,38	
D 106 A	10 A-2	$5/8 \times 3/8"$	15,875	56.000	44.400	1,40	1,92	2, 3, 6, 7, 8	9,53	13,84	14,40	38,60	39,90	10,16	5,08	18,11	
D 128 A ¹⁾	12 A-2	$3/4 \times 1/2"$	19,05	84.000	63.600	2,12	2,90	2, 3, 4, 6, 7, 8	12,70	17,75	18,00	48,10	49,50	11,91	5,94	22,78	
D 1610 A	16 A-2	$1 \times 5/8"$	25,40	145.000	113.400	3,58	5,01	2, 3, 4, 6, 7, 8	15,88	22,60	22,80	61,40	63,30	15,88	7,92	29,29	
Triple																	
Tr 85 A	08 A-3	$1/2 \times 5/16"$	12,70	50.000	42.300	1,32	1,78	2, 3, 6, 7, 8	7,94	11,15	12,00	45,40	46,30	7,95	3,96	14,38	
Tr 106 A	10 A-3	$5/8 \times 3/8"$	15,875	80.000	66.600	2,10	2,89	2, 3, 6, 7, 8	9,53	13,84	14,40	56,70	58,00	10,16	5,08	18,11	
Tr 128 A	12 A-3	$3/4 \times 1/2"$	19,05	125.000	95.400	3,18	4,28	2, 3, 4, 6, 7, 8	12,70	17,75	18,00	71,00	72,30	11,91	5,94	22,78	
Tr 1610 A	16 A-3	$1 \times 5/8"$	25,40	210.000	170.100	5,37	7,47	2, 3, 4, 6, 7, 8	15,88	22,60	22,80	90,70	92,70	15,88	7,92	29,29	

Roller chains, double-pitch type

to DIN 8181 and ISO 1275:1995

LR 165 SL	208 B	$1 \times 5/16"$	25,40	22.000	18.000	0,50	0,52	2, 4, 6, 8	7,75	11,30	11,80	16,90	18,60	8,51	4,45	-	
LR 206 SL	210 B	$1 1/4 \times 3/8"$	31,75	28.000	22.400	0,67	0,63	2, 4, 6, 8	9,65	13,28	15,10	19,50	20,80	10,16	5,08	-	
LR 247 SL	212 B	$1 1/2 \times 7/16"$	38,10	34.000	29.000	0,89	0,85	2, 4, 6, 8	11,75	15,62	16,10	22,70	24,10	12,07	5,72	-	
LR 3211	216 B	$2" \times 17 \text{ mm}$	50,80	75.000	60.000	2,10	2,10	2, 4, 6, 8	17,02	25,45	20,60	36,10	38,10	15,88	8,28	-	

1) Also available with straight side plates

2) Varying dimensions for cranked links

It should be noted that if cranked links are fitted, the breaking strength of the chain may be reduced by approximately 20%.

The suffix SL indicates chains with particularly wear-resistant pins.

Roller chains, double-pitch type

